

# Wall Panel Systems, Inc.

1720 Howard Place  
 Redlands, CA. 92373  
 Tel: 877-333-4WPS  
 support@wallpanelsystems.net  
 www.WallPanelSystems.net

**WPS Inc. Job Number 10430**

<input type="checkbox"/>	INITIAL SUBMITTAL	DATE: 06/18/2018
<input type="checkbox"/>	REVISE&RESUBMIT	DATE: 06-26-2018
<input type="checkbox"/>	FIELD DIMENSIONS	DATE: 00-00-2017
<input checked="" type="checkbox"/>	CLEAR COPY R1	DATE: 08-20-2018
<input type="checkbox"/>	AS BUILT	DATE: 00-00-2017

**PROJECT:**

**OAKWOOD SUITES**

**470 S SAN VINCENTE BLVD**

**LOS ANGELES, CA 90048**

**Contractor-Installer-Millworker  
 Print, Sign & Date Approved Copy**

PRINT: \_\_\_\_\_

SIGN: \_\_\_\_\_

DATE: \_\_\_\_\_

Architect:

MILLWORKER:

ARCHITECT'S NOTES & COMMENTS

MATERIALS: DESIGNATION WP-1

PANEL BRAND	TRESPA METEON
PANEL CONSTRAINTS	109" WIDTH X 53" HEIGHT X 3/8" DEPTH
PANEL COLOR	RUSTED BROWN #NWO1/MT
PANEL DIRECTION	HORIZONTAL

SYSTEM INFORMATION ES-500 CONCEALED (ES-801, ES-820, ADJUSTABLE MOUNTING BRACKET)

MATERIALS: DESIGNATION

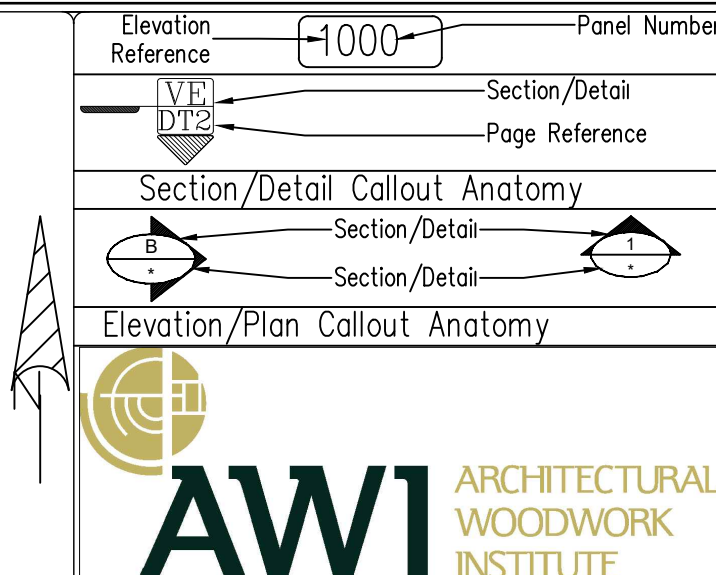
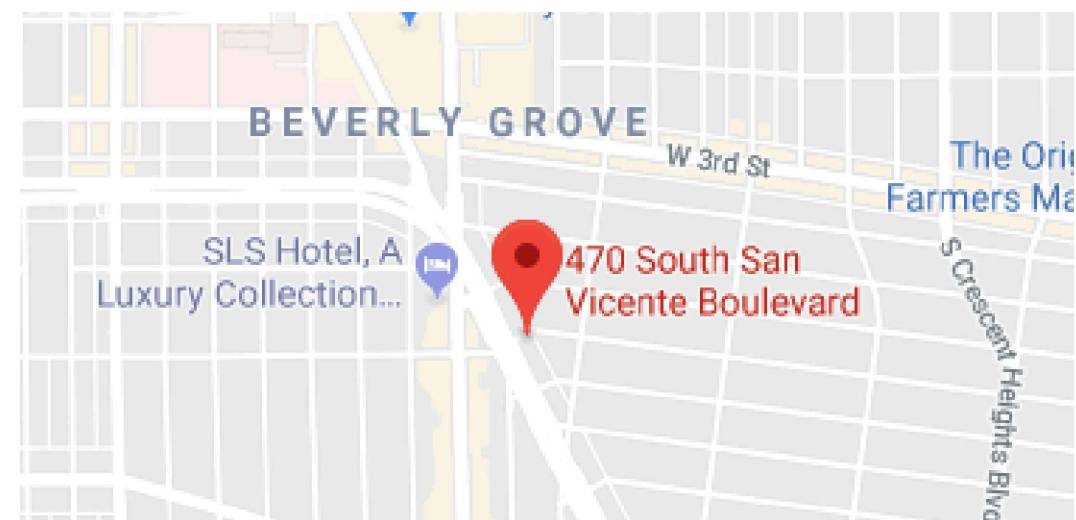
PANEL BRAND	
PANEL CONSTRAINTS	
PANEL COLOR	
PANEL DIRECTION	

SYSTEM INFORMATION

MATERIALS: DESIGNATION

PANEL BRAND	
PANEL CONSTRAINTS	
PANEL COLOR	
PANEL DIRECTION	

SYSTEM INFORMATION



**Caution:** These shop drawings are not approved and must not be used by any contractor or installer until they are approved and dimensions are verified against field conditions. Use of these drawings will be at your own risk. Reproduction of these drawings must be obtained in writing prior to reproduction. This drawings is intended for submittal review only.

**GENERAL NOTES:**

- 1) CONTRACTOR TO PROVIDE ANY REQUIRED BACKING AND COORDINATE WITH INSTALLER.
- 2) CONTRACTOR TO PROVIDE ALL STRUCTURAL AND ARCHITECTURAL SUPPORTS TO CARRY WALL AND/OR CEILING LOAD PER ENGINEERED SPECIFICATION.
- 3) ALL MATERIAL FOR ELECTRICAL, PLUMBING AND CABINET CASEWORK ARE NOT CONTRACT
- 4) ALL ELECTRICAL, PLUMBING AND WALL FIXTURE LOCATION WITHIN WALL OR CEILING PANELS TO BE COORDINATED WITH ARCHITECT AND CONTRACTOR.
- 5) ALL DIMENSIONS TO BE VERIFIED BY INSTALLER REFLECTING FIELD CONDITIONS.
- 6) ALL PANELS OVER 34" HIGH TO HAVE MIDWALL CLIPS AND RAILS AT 34" ON CENTER

# Building Conditions Guidelines

A.) In order to provide the finest quality panels material and to assist in proper coordination of panel delivery and installation activity with the other trades on the project. The following criteria have been established and define the required degree of building readiness to facilitate the start of installation. It is imperative guidelines be met in order to minimize or eliminate the potential damage to panel material prior to acceptance by the end user. Installation firms should utilize these criteria to determine jobsite readiness during their pre-installation inspections.

**B.) DELIVERY, SITE HANDLING AND STORAGE.**

1. Upon arrival of your order, inventory and inspect each panel and all accessories. If there are any signs of damage, note the bill of lading for the time of delivery and document the damage. Failure to do so can make it difficult to file a freight claim. Send a list of damaged materials to WPS and contact your WPS representative for further instructions. It is crucial that damaged panels, accessories, or packaging be reported to WPS as soon as they are discovered.
2. WPS panels should be transported using WPS standard pallets or crates. Bailing bands are to be removed upon delivery, be sure NOT to leave these on for storage. Lift the panels from each stack individually, taking care not to scratch or damage any adjacent panels when removing panels from the stack.
3. Panels can be stored vertically on a flat surface free of debris, or kept on pallets or crates with supports at 12 inches on center or less. All horizontal surfaces, including panels and pallets, should be covered with a clean membrane or board to protect the panels from damage. Unwrapped stacks should be covered with plastic sheeting in order to minimize damage from dirt and moisture. Remember to remove bailing bands prior to storage. Panels need to be stored in an area that is well covered from the elements, cool, ventilated, and dry.

C.) In order for delivery of paneling materials to take place, the following general guidelines must be applicable prior to the shipment of materials:

1. Lock-up rooms available.
2. Loading dock accessible.
3. Entry to elevator or hoist.
4. Unobstructed use hosting during delivery and easy distribution of materials be available.
5. Marshalling area for materials to be available.
6. Areas of installation to be broom clean.
7. Minimum trade interference in area of installation.

## SHEET INDEX

8/17/2018

COVER & NOTES

INDEX

DETAILS- 1 Plan View Illustrations & Sections

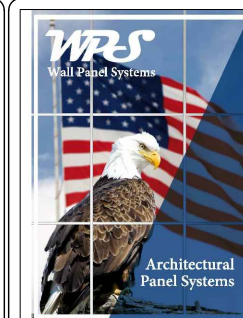
ELEVATION- 1

### ABBREVIATIONS

.25 LP---.25" Low Profile System (WPS, Inc.)  
 AFF-----Above Finish Floor  
 B/O-----By Others  
 CAP-----Captured System (WPS, Inc.)  
 CL-----Center Line  
 FC-----Field Cut  
 F-----Finish Edge  
 FE-----Finish End  
 FF-----Finish Floor (by other)  
 FW-----Finish Wall (by other)  
 Gyp.----Gypsum (by other)

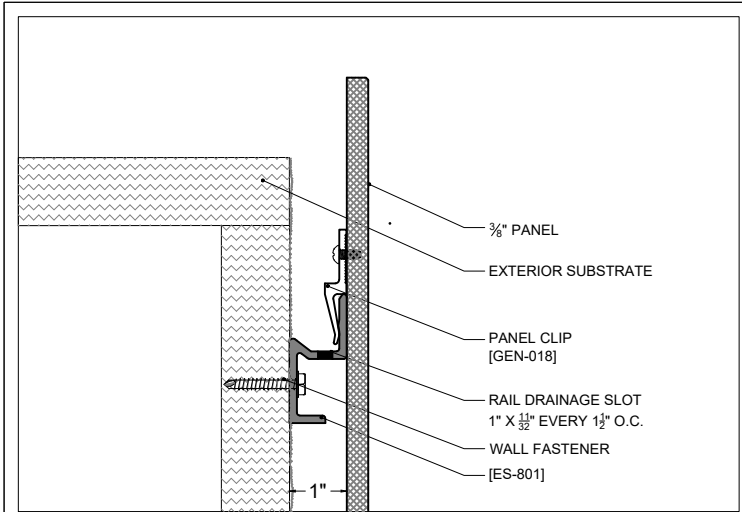
NIC---Not In Contract  
 NTS---Not to Scale  
 ORS---Open Reveal System (WPS, Inc.)  
 Opp.---Opposite  
 PT---Paint  
 PH.---Phenolic Panel  
 PL.---Plastic Laminate  
 RRS---Recessed Reveal System (WPS, Inc.)  
 RBP---Removable Back Panel  
 SBP---Scribe Base of Panel

SHA---Shadowline system (WPS, Inc.)  
 SIM---SimialrSWSolid Wood  
 TBD---To be Determined  
 Typ.---Typical  
 UAS---Universal Architectural System (WPS, Inc.)  
 UNO---Unless Noted Otherwise  
 VNR---Veneer  
 VIF---Verify in Field  
 VHB---Very High Bonded  
 SSP---Scribe Side of Panel  
 STP---Scribe Top of Panel

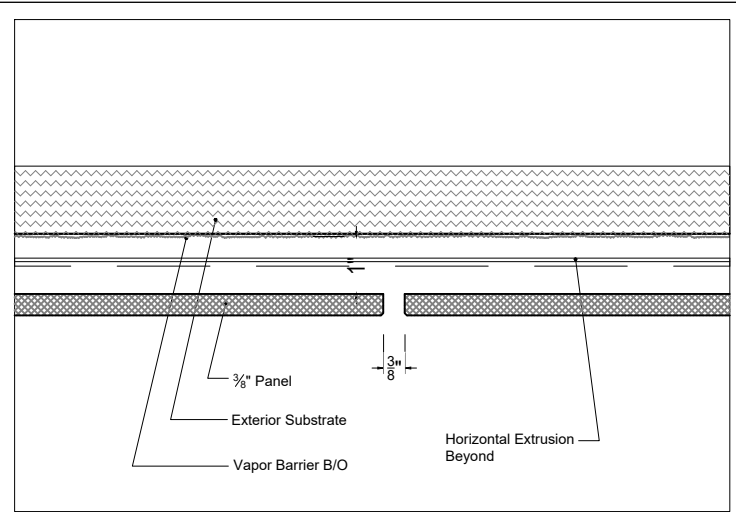


*Wall Panel Systems, Inc.*

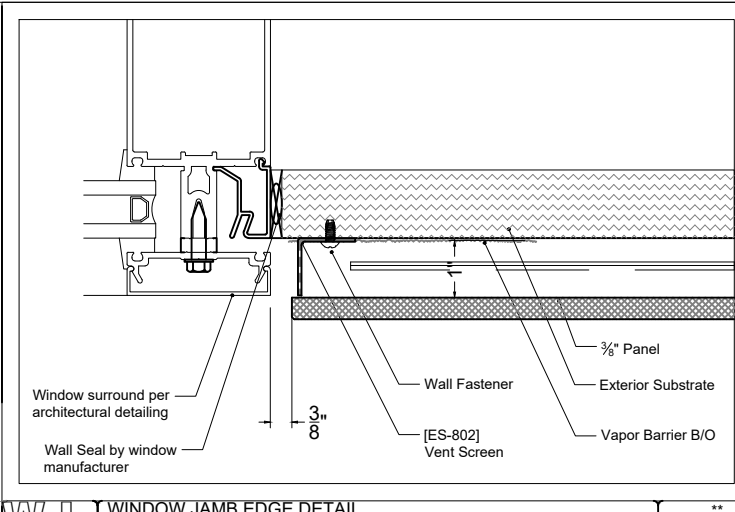
1720 Howard Place  
 Redlands, CA 92373  
 Tel: 909.307.8888  
 Toll Free: 877.333.4WPS  
 support@wallpanelsystems.net  
 www.WallPanelSystems.net



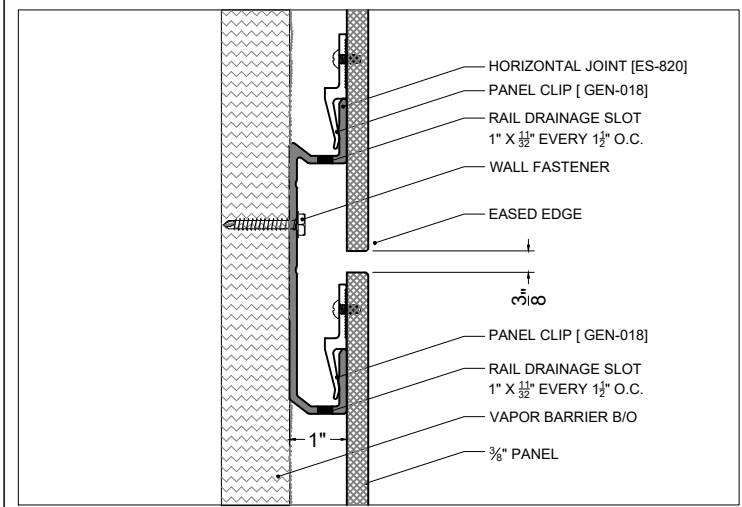
**TE** TOP EDGE / HEAD TERMINATION DETAIL  
ES500 ARCH. REF.



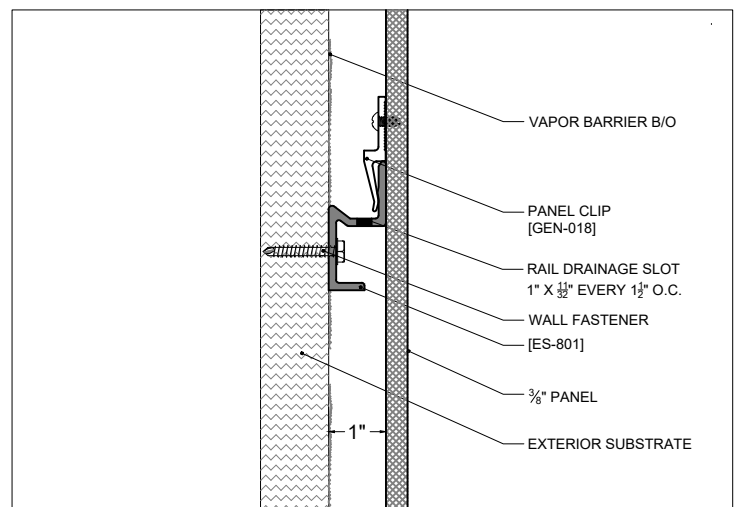
**VJ** VERTICAL JOINT RAIL DETAIL  
EXTERIOR SYSTEM 500 ARCH. REF.



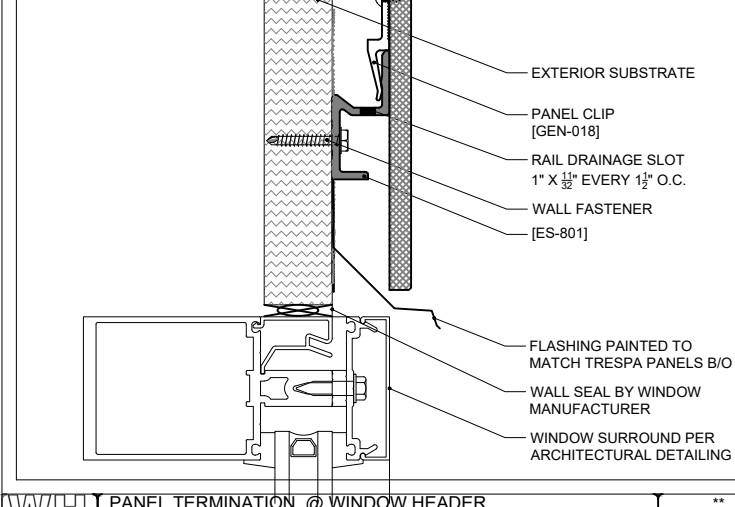
**WJ** WINDOW JAMB EDGE DETAIL  
EXTERIOR SYSTEM 500 ARCH. REF.



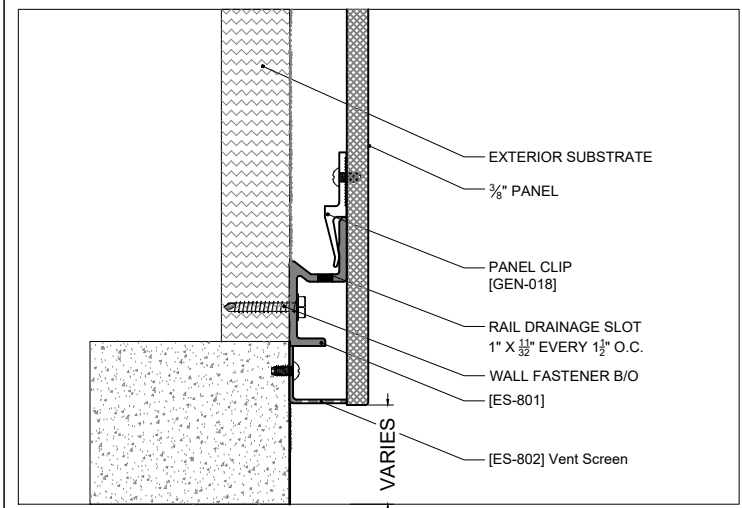
**HJ** HORIZONTAL JOINT DETAIL  
ES500 ARCH. REF.



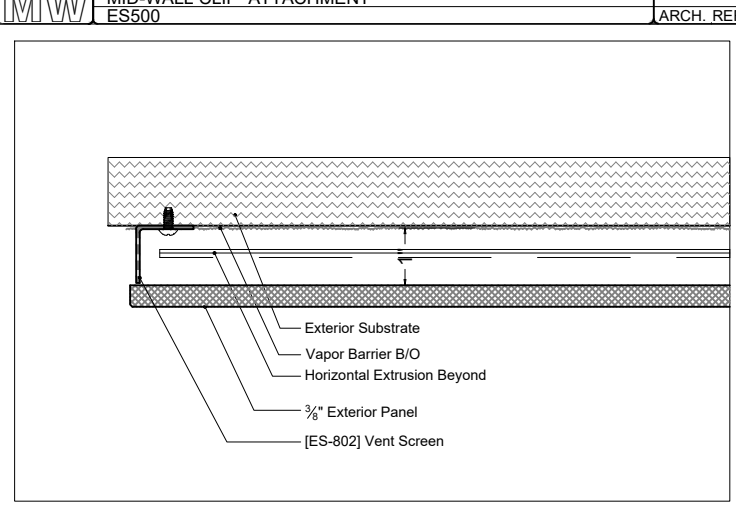
**MW** MID-WALL CLIP ATTACHMENT  
ES500 ARCH. REF.



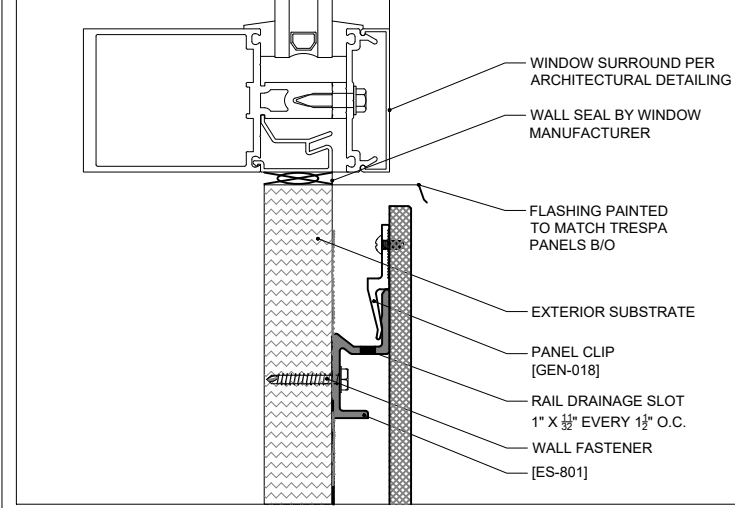
**WH** PANEL TERMINATION @ WINDOW HEADER  
ES500 ARCH. REF.



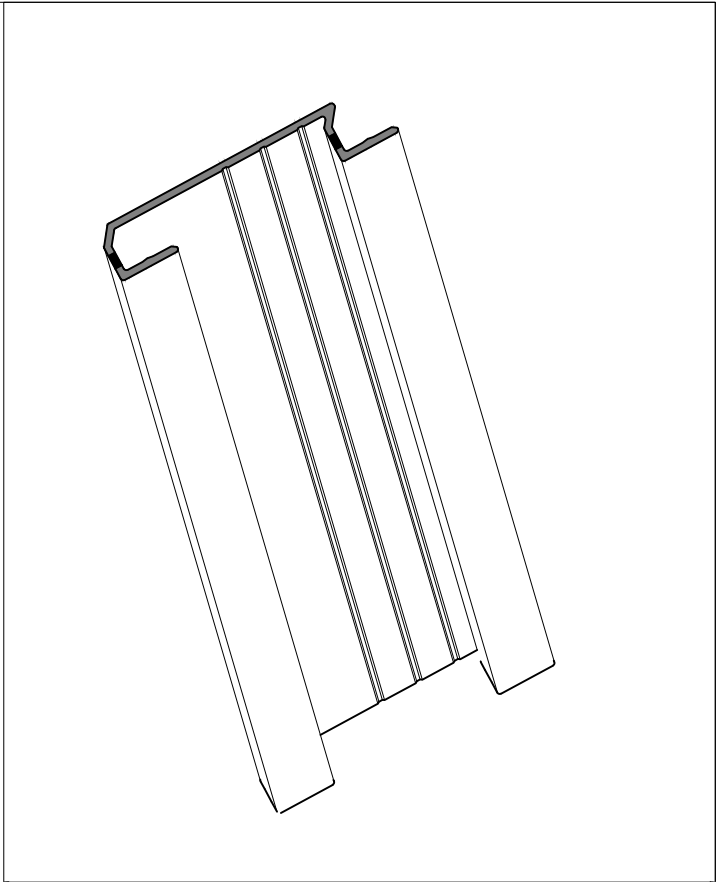
**BE** BASE EDGE / PANEL TERMINATION DETAIL  
ES500 ARCH. REF.



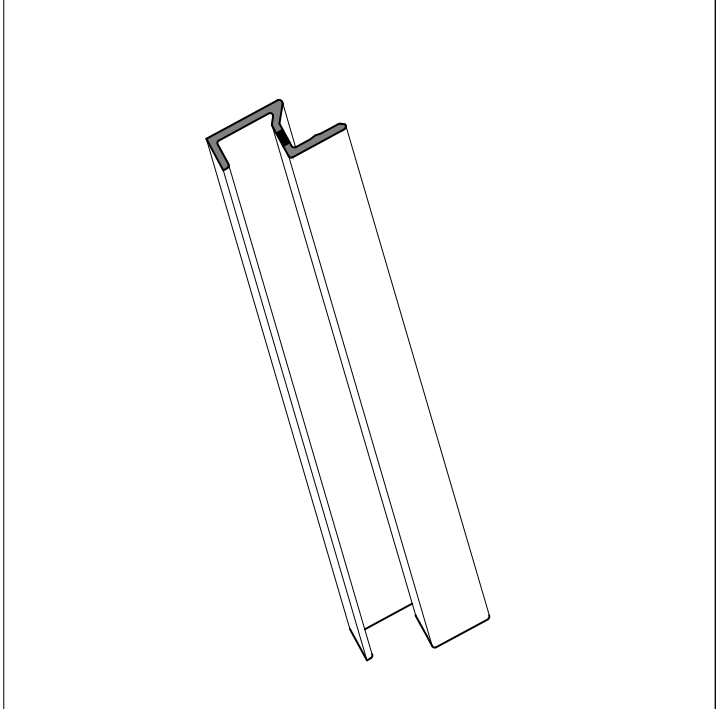
**SP1** VERTICAL EDGE DETAIL  
EXTERIOR SYSTEM 500 ARCH. REF.



**WS** PANEL TERMINATION @ WINDOW SILL  
ES500 ARCH. REF.



**EXTRUSION  
EDGE TRIM ES-820**



**EXTRUSION  
EDGE TRIM ES-801**

SHOP DRAWINGS HAVE NOT BEEN APPROVED AND ARE FOR ILLUSTRATION PURPOSES ONLY

**WPS** Wall Panel Systems, Inc.  
1720 Howard Place  
Redlands, CA. 92373  
Phone: (887) 333-4WPS  
support@wallpanelsystems.net  
www.wallpanelsystems.net

**PROJECT**  
**OAKWOOD SUITES**  
470 S. SAN VINCENTE BLVD  
LAS ANGELES, CA 90048

**ARCHITECT**  
**ATA**  
8924 LINBLADE ST  
CULVER CITY, CA 90232

ISSUED FOR RECORD		
By:	Description:	Date:
EN	INITIAL SUBMITTAL	06/18/2018
EN	REVISE & RESUBMIT	06-26-2018
EN	FIELD DIMENSIONS	00-00-2017
Mc	CLEAR COPY	08-20-2018
EN	AS BUILT	00-00-2017

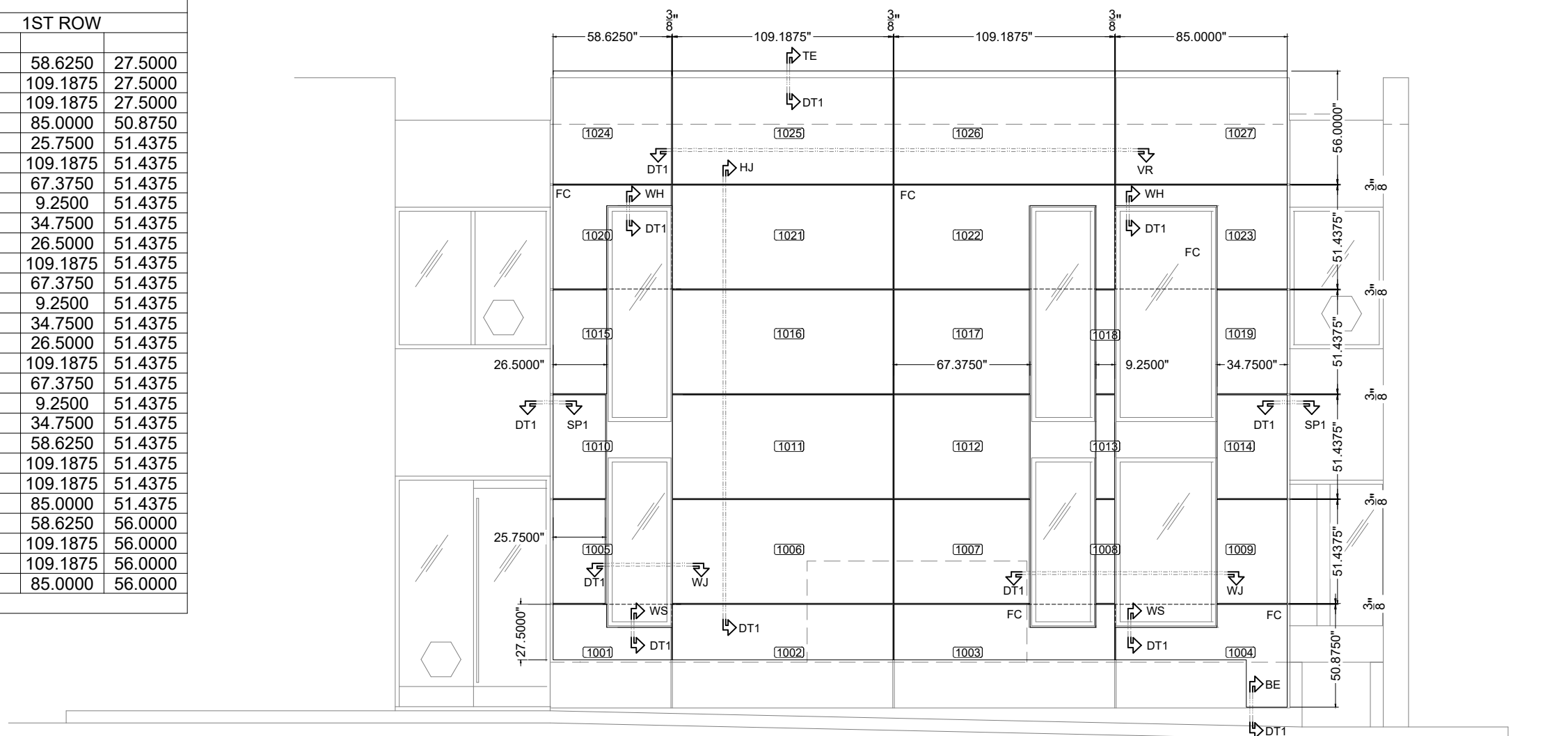
**SHEET**  
**DT1**



Floor	Plan	PLAN VIEW @ PANELING	1/A210
LVL.	1	WEST ELEVATION	ARCH. REF.

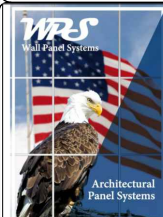


ELV-1 PANEL SCHEDULE		
PANEL #	WIDTH	HEIGHT
1ST ROW		
1001	58.6250	27.5000
1002	109.1875	27.5000
1003	109.1875	27.5000
1004	85.0000	50.8750
1005	25.7500	51.4375
1006	109.1875	51.4375
1007	67.3750	51.4375
1008	9.2500	51.4375
1009	34.7500	51.4375
1010	26.5000	51.4375
1011	109.1875	51.4375
1012	67.3750	51.4375
1013	9.2500	51.4375
1014	34.7500	51.4375
1015	26.5000	51.4375
1016	109.1875	51.4375
1017	67.3750	51.4375
1018	9.2500	51.4375
1019	34.7500	51.4375
1020	58.6250	51.4375
1021	109.1875	51.4375
1022	109.1875	51.4375
1023	85.0000	51.4375
1024	58.6250	56.0000
1025	109.1875	56.0000
1026	109.1875	56.0000
1027	85.0000	56.0000



01 A	PANELING ELEVATION	2/A301
	WEST ELEVATION	ARCH. REF.

SHOP DRAWINGS HAVE NOT BEEN APPROVED AND ARE FOR ILLUSTRATION PURPOSES ONLY



*Wall Panel Systems, Inc.*  
 1720 Howard Place  
 Redlands, CA. 92373  
 Phone: (887) 333-4WPS  
 support@wallpanelsystems.net  
 www.wallpanelsystems.net

PROJECT

**OAKWOOD SUITES**  
 470 S. SAN VINCENTE BLVD  
 LAS ANGELES, CA 90048

ARCHITECT

**ATA**  
 8924 LINBLADE ST  
 CULVER CITY, CA 90232

FOR EXCLUSIVE USE BY WPS

ISSUED FOR RECORD		
By:	Description:	Date:
EN	INITIAL SUBMITTAL	06/18/2018
EN	REVISE & RESUBMIT	06-26-2018
EN	FIELD DIMENSIONS	00-00-2017
Mc	CLEAR COPY	08-20-2018
EN	AS BUILT	00-00-2017

ELEV.

1